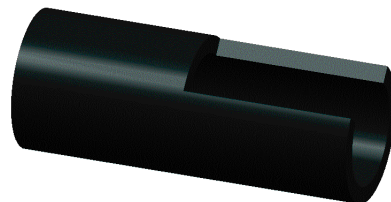


## CLUTCH PIPE



### Construction and material:

|       |                 |
|-------|-----------------|
| Layer | PA12HL / PA6.10 |
|-------|-----------------|

### Hose dimension\*:

|         |  |         |         |           |          |          |          |  |
|---------|--|---------|---------|-----------|----------|----------|----------|--|
| ID [mm] |  | 8 ± 0.1 | 8 ± 0.1 | 8,5 ± 0.1 | 11 ± 0.1 | 13 ± 0.1 | 14 ± 0.1 |  |
| OD [mm] |  | 3 ± 0.1 | 4 ± 0.1 | 4 ± 0.1   | 6 ± 0.1  | 6 ± 0.1  | 6 ± 0.1  |  |

### Mechanical - Chemical characteristics:

|  |  |
|--|--|
| Max Working pressure [bar]                   | see drawings   |
| Max Working temperature [C°]                 | 110° C   |
| Min Working temperature [C°]                 | -40° C   |
| Peak temperature [C°]                        | 120° C   |
| Burst pressure resistance [bar]              | Depending on pipe thickness and diameter ex. 8x3 mm burst 550 bars |
| Fluid resistance                             | DOT 4  |
| Permeation TF1 at 60°C [g/m <sup>2</sup> /h] | not required   |
| Permeation TF1 at 60°C [g/m/24h]             | not required   |
| Max Cold impact resistance [C°]              | -40° C   |

### Standard and :

|                        |                      |      |                 |   |           |   |
|------------------------|----------------------|------|-----------------|---|-----------|---|
| Product                | Minimum batches      | Coil | Minimum lenghts | * | Preformed | x |
| International standard | DIN73378             |      |                 |   |           |   |
| Standard               | Cap. FIAT 9.02138/32 |      |                 |   |           |   |
| Application            | Clutch Lines         |      |                 |   |           |   |
| Patent                 |                      |      |                 |   |           |   |

\* eventuals request to discuss with the customer